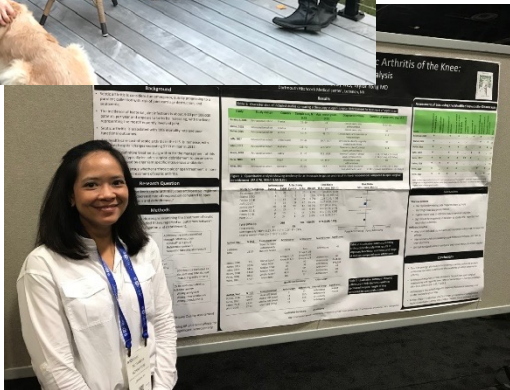
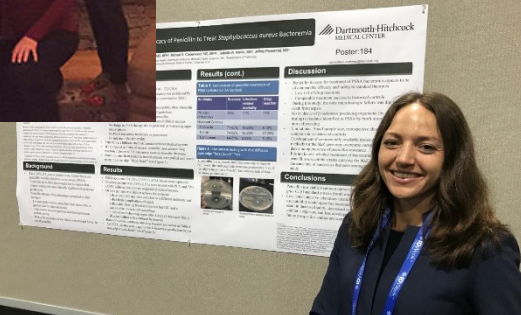


Welcome to DHMC!



Introductions

- DHMC
- PD – Me!
- ID Fellowship @DartmouthID
 - philosophy



Clinical Work

- Inpatient

- DHMC

Green Team
Compromised Host
General ID

Red Team
Ortho
General ID

Fuchsia Team
Inpatient overflow
E-consults
Curbsides
Elective outpt

- Short/long call
- Caps (4 new, 12 follow-up)
- How many rotations?

- Outpatient

- Lebanon
- Bedford – HIV – 18 months of fellowship
- General, OPAT, HIV, Travel, transplant, peds
- Other options: Brattleboro, Nashua
- VA – inpatient, outpatient, academic
- Cheshire – Rural affiliate hospital
- Call (about 1 in 9-10 weeks)
- Away rotations (MGH, Nat. Jewish AFB)

Learning

- Micro/Immuno
 - Rounds, rotation
 - Conferences
 - Journal Club
 - Didactics, Board prep
 - Stewardship
 - Approval (Redcap)
 - Infection Control
 - Public Health – outbreak investigation
 - Travel and Tropical Med
 - Transplant - specifics
 - Peds
 - STD course
 - Conferences – IDWeek, Ryan White, etc.....
 - Committees
 - LPMR
 - Critical Care
- 



Teaching

- Mentorship
 - Faculty Mentor
 - Research Mentor
- Chief Academic Fellow
- ID Conference
- Resident Teaching
- Geisel School of Medicine
 - Med student teaching
 - Faculty Appointment



Research

- QI/QC
- Epidemiology
- Basic Science
- Micro/Immuno
- Cross-discipline
- Rural, Underserved
- The Dartmouth Institute
- VA Research Institute
- International
- Public Health
- anything you heart desires!



Dartmouth
GEISEL SCHOOL OF
MEDICINE

CENTER for
MOLECULAR
EPIDEMIOLOGY



dhhs

New Hampshire Department of
HEALTH AND HUMAN SERVICES

Support

- Kathie!
- ID pharmacists
- OPAT nurse, APP
- HIV and general ID nurses
- Secretary, scheduling
- Cross-discipline groups
- GME
- Wellness
- Benefits



What are we working on?

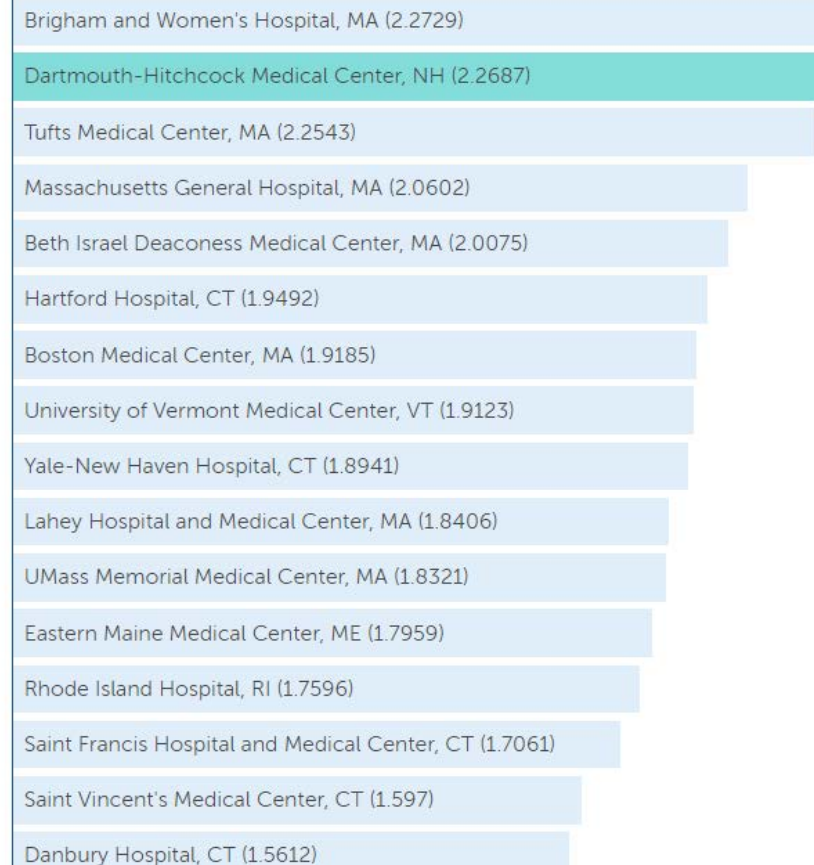
- Expansion
 - Faculty, space, fellows
- Diversity equity and inclusion
 - faculty, research, mentorship
- Improve efficiencies of work
- Rural ID fellowship
- Housing options



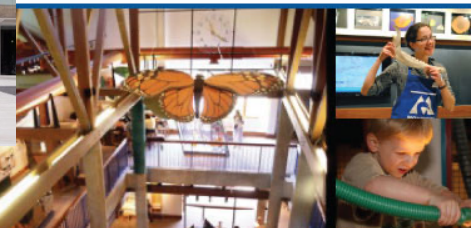
What makes us unique?

- Highly academic program in a rural area
- Fellow focused
 - individualized
- Case diversity is exceptional
- Career-oriented
- Close College ties
- Public Health
- Strong micro
- Diverse faculty interests

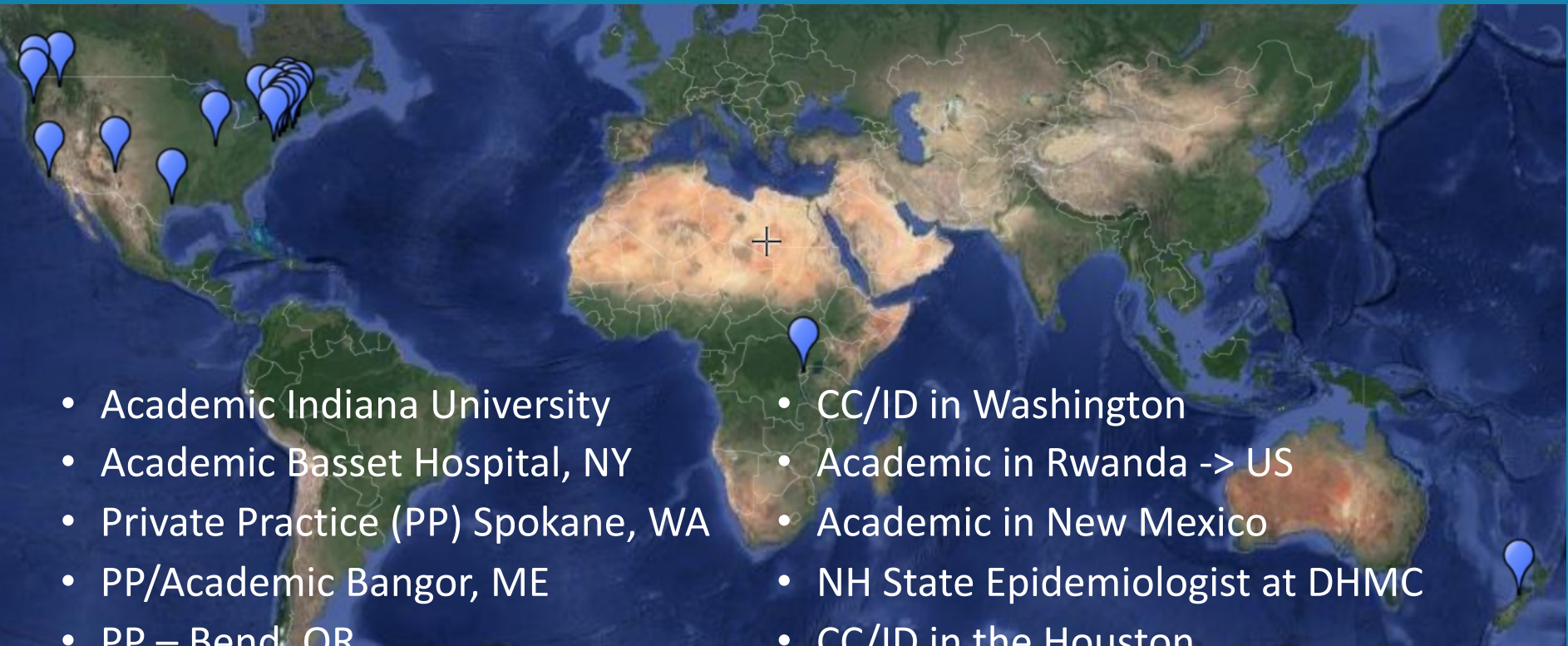
Case Mix Index



The CMI reflects the diversity, clinical complexity, and resource needs of all the patients in the hospital. MS-DRG weight/# discharges. A higher CMI indicates a more complex and resource-intensive case load.



Fellows Careers....



- Academic Indiana University
- Academic Basset Hospital, NY
- Private Practice (PP) Spokane, WA
- PP/Academic Bangor, ME
- PP – Bend, OR
- PP Spokane, WA
- Academic at DHMC
- Private/Academic in Connecticut
- Academic at Baystate in Massachusetts
- Private Practice/Academic at the University of Vermont
- CC/ID in Washington
- Academic in Rwanda -> US
- Academic in New Mexico
- NH State Epidemiologist at DHMC
- CC/ID in the Houston
- Academic at DHMC
- Academic in Rwanda -> New Zealand
- Academic in Indiana
- Private/Academic in upstate New York
- Private/Academic in Spokane, WA